

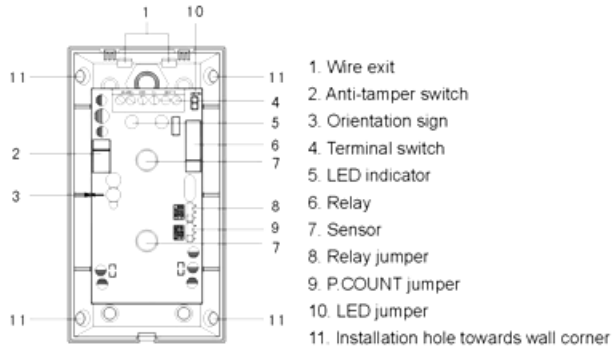
PET IMMUNITY

DUAL PASSIVE INFRARED DETECTOR



Pet Immunity Dual Passive Infrared Detector , for indoor using, is designed to avoid misinformation caused by pets. It accords with national standards of P. R of China: GB10408.1-2000. The detector will alarm when human being enters detecting area, but not alarm when pet enters detecting area. This product effectively prevent from misinformation caused by pet. Please read the product introduction carefully for correct usage.

GENERAL VIEW



CHARACTERISTICS

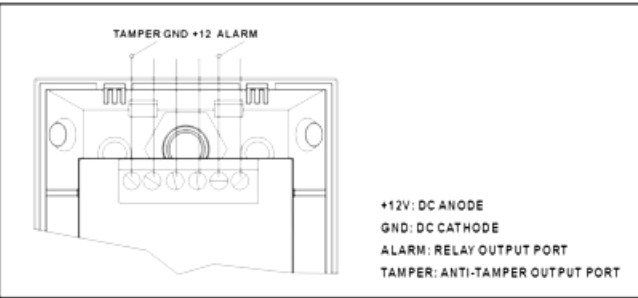
- Dual-sensor collecting signal, prevent from misinformation effectively
- MPU signal analysis, avoid misinformation caused by pet
- Auto-temperature compensation, adapt environment changing
- Count pulse controlling the sensitivity enhances anti-interference function
- Alarm modes optional for connecting different host computers

TECHNICAL SPECIFICATIONS

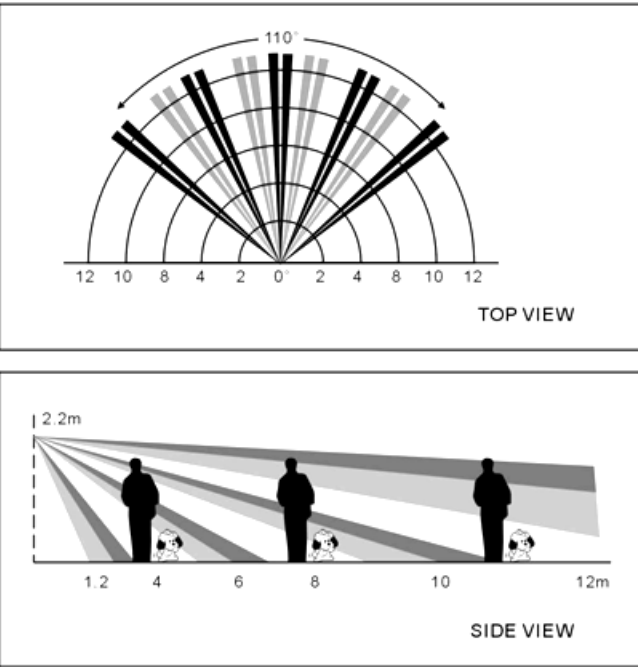
Supply voltage	DC12V (rangeDC9~16V)
Current	≅ 25mA
Self-check	60s
Detecting method	Dual-sensor detecting
Sensor type	Dual infrared sensor of low-noise& heat-release
Pet immunity level	Below 35kg

Working temperature	-10℃~+50℃
Installation method	Wall mounted
Installation height	2.2m around
Detecting angle	110°
Detecting range	12m
Relay output	N.O/N.C optional, contact point capacity28VDC,80mA
Anti-tamper switch	N.C without voltage output, contact point capacity28VDC,100mA

TERMINAL BLOCK FIGURE



DETECTING RANGE



INSTALLATION OF THE DETECTOR

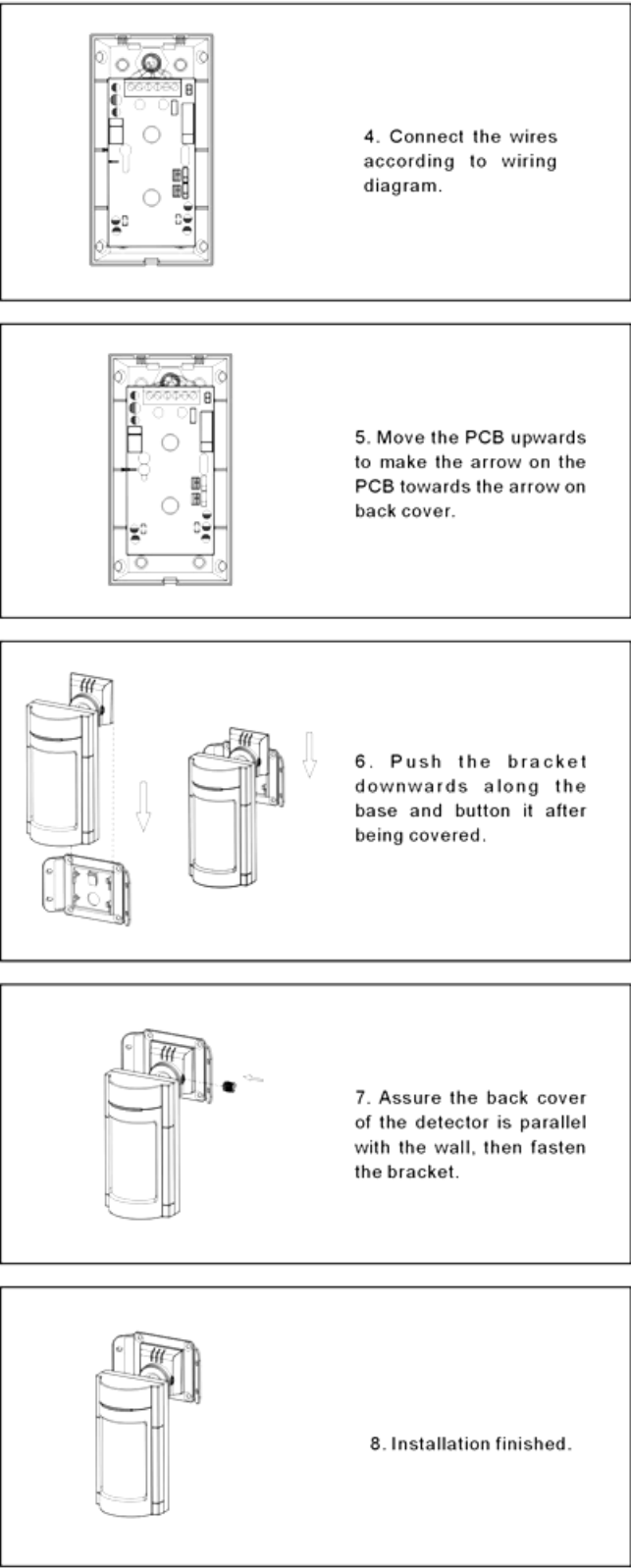
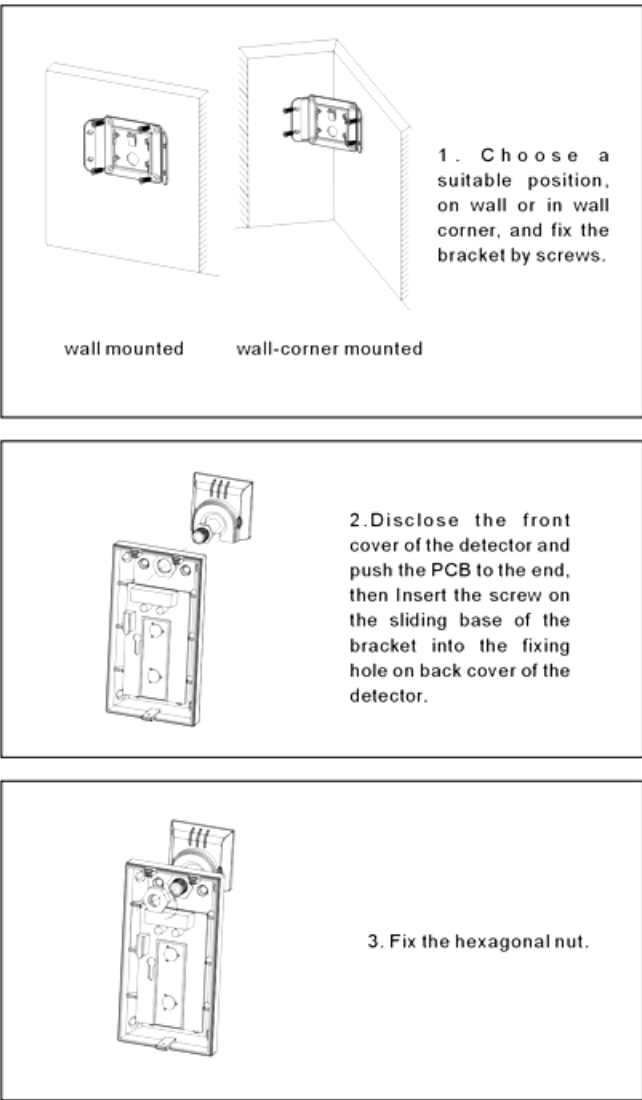
1. The detector should be installed at balconies, windows or gates etc, and enable human being or pet to walk through detecting range as much as possible. Recommended installation height is 2.2m.
2. Insert a screwdriver into the small square hole in front cover of the detector and separate the front cover and back cover, then loosen the screw and move the PCB up-and-down. Fix the back cover at right position by screws and assure it is parallel with the wall.
3. Wiring as the figure and put the wire through the wire exit, move the PCB to make the arrow on PCB towards the arrow on back cover, then fix the PCB in back cover by screw.
4. Avoid installing the detector close to objects that can cause rapid temperature changes such as heaters, fans, refrigeratories, ovens etc, and prevent the detector from point-blank sunshine.
5. To ensure detecting effect., there should be no veil in front of the detector. Please note during installation that the LED should be on the upside.
6. Advise to use detector installation bracket.(refer to the BRACKET INSTALLATION).

USAGE

1. With power supply after wiring as the figure, the LED flashes constantly, indicating the detector enters self-check. The detector turns into normal detecting state when the LED is off after 60s.
2. P.COUNT jumper is used to control pulse count choosing, 1P(the first grade) is of high sensitivity, generally for common environment. 2P(the second grade) is of great anti-interference function, which is usually used in bad environment. Please choose appropriate pulse count according to different environments. Manufactory set is 1P.
3. RELAY jumper is used for alarm mode choosing: N.C is normally close, alarm in open circuit; N.O is normally open, alarm in short circuit, convenient to connect different host computers. Manufactory setting is N.C.
4. LED jumper controls the LED, with no effect on other functions of the detector.

LED ON	LED JUMPER	LED: Short circuit with indicating open circuit without indicating
3	RELAY JUMPER	RELAY: 1&2 TO BE N.O
2		2&3 TO BE N.C
1		1&2 TO BE 1P
3	P.COUNT JUMPER	P.COUNT: 2&3 TO BE 2P
2		
1		

BRACKET INSTALLATION



NOTE

1. Please install and use the detector correctly according to the introduction. Do not touch the detector surface to warrant the sensitivity of the detector. If necessary, clean the sensor with soft cloth dipping a little alcohol after cutting off the power.
2. Avoid using the detector in environment with great changes of temperature.
3. This product can reduce the possibility of accident, but can not guarantee absolute safety, so besides using the detector correctly, please take all necessary precautions and enhance safety consciousness in daily life.