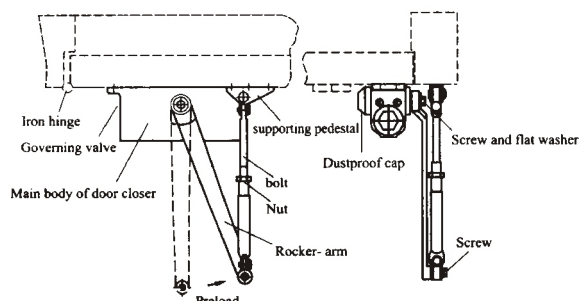
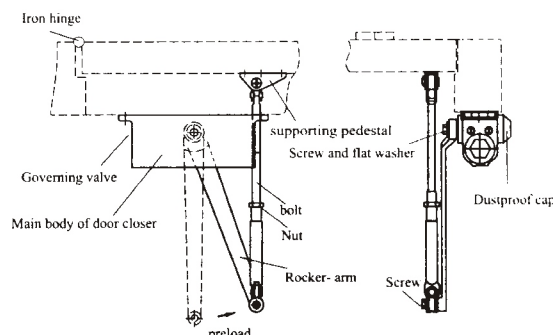


Model No. : DSW-06

Vertical installing inside the door



Vertical installing outside the door

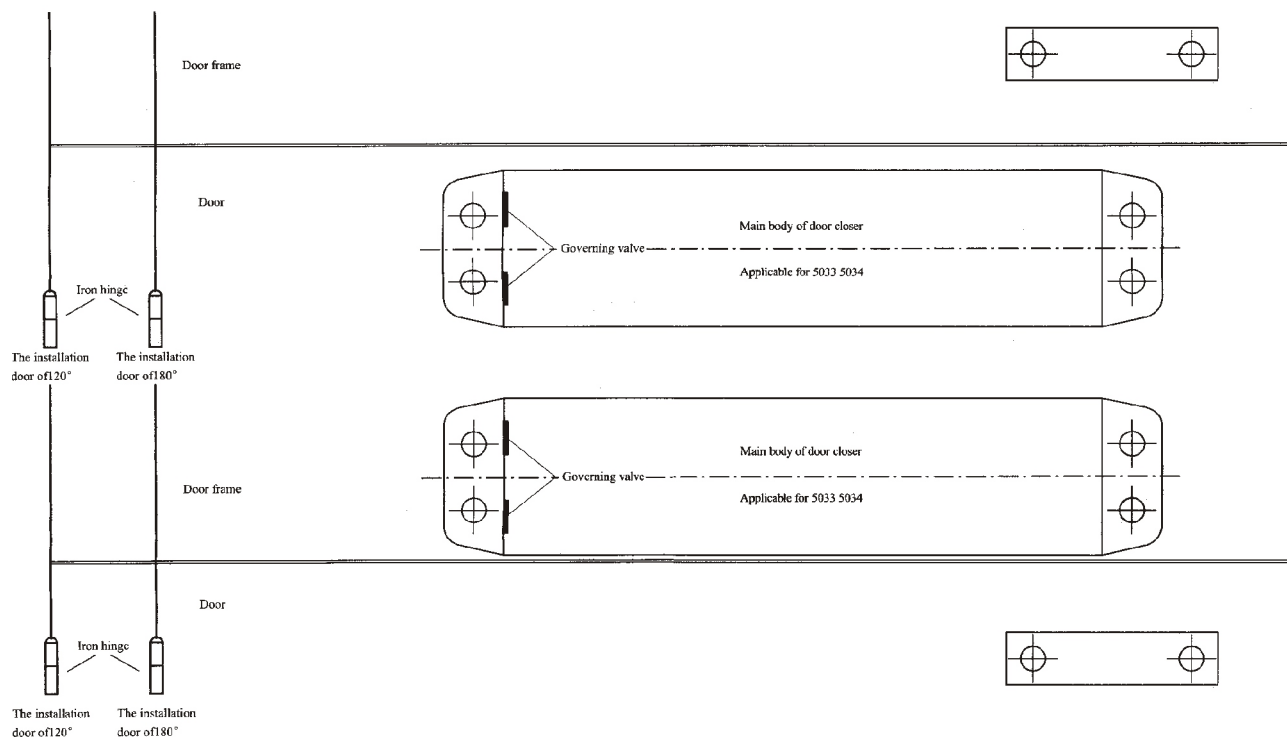


I . Steps of door closer vertical installation inside or outside the door.

1. According to the needs of door installation of inside or outside, please cut the corresponding installation template and affix it on the door and the doorframe respectively, then drill the mount hole by electric drill.
2. To install the main body of door closer on the door or doorframe through the drilled mount hole, and to fix it tightly while governing valve must be direct to hinge.
3. To unfix the washers and screws from the rocker-arm and bolt, and install the supporting pedestal of bolt on the corresponding door or doorframe, and fix it tightly with screws.
4. To assemble plumb the rocker-arm on the tenon of the gear shaft, and fix it tightly by assembling screws.
5. To preload the rocker-arm to a certain degree rotation, then assemble it with the bolt which plumb to the door and fix it tightly by flat washer and screws (The length of the blot can be adjusted, then to tighten the nut of the bolt).
6. To cover the dustproof cap on the other side of the gear shaft.

Standard installation:

To instal the template inside the right door while to install the template inside the left door perpendicularly and symmetrically.



Reverse installation:

To install the template outside the right door while to install the template outside the left door symmetrically.

* The information contained herein is believed to be correct, but no guarantee for accuracy, completeness DSW Electronics Ltd. reserves the right to make changes without notification.