

SPECIFICATION OF FIRE ALARM

EFA-186

SPECIFICATIONS

No.	The name of	Index	Unit
1	Circumstance temperature	-10+55	°C
2	Circumstance humidity	≤95%	RH
3	Work voltage	DC24 ± 15%	V
4	Wore current(average)	200	MA
5	Flash intension	≥1.2	Ws
6	Flash cycle	85-120	S
7	Sound pressure lever	≥100	Db
8	Life-span of flash lamp	≥10000	Time
9	Measure	105x80x65	mm

CHARACTERISTIC

The company has developed the light alarm in the near feature which is the terminal equipment of alarm. This equipment especially suit the occasion of alarm without sound (fire control).

The product's index of flash is very great because it adopted the high, volume flash lamp from German, it will shape up the effect from vision when input the low volume.

The using of EFA-186 alarm have great adjustability, have rather lower require of inputting electrical source, persuade to use within rather higher volume range, persuade to supply the DC within rather higher output ripple factor, (can use the current of anti-commutate ripple directly). The optimal work-top of design is 24 Volume certainly.

USAGE

1. The index of capability was measured with inputting 24 Voltage. The cycle of flash and influence of volume were changed when the voltage change.
2. The product's cycle of frequent lamping is set range 85 from 120 temporarily. We can adjust suitably when user have special request.

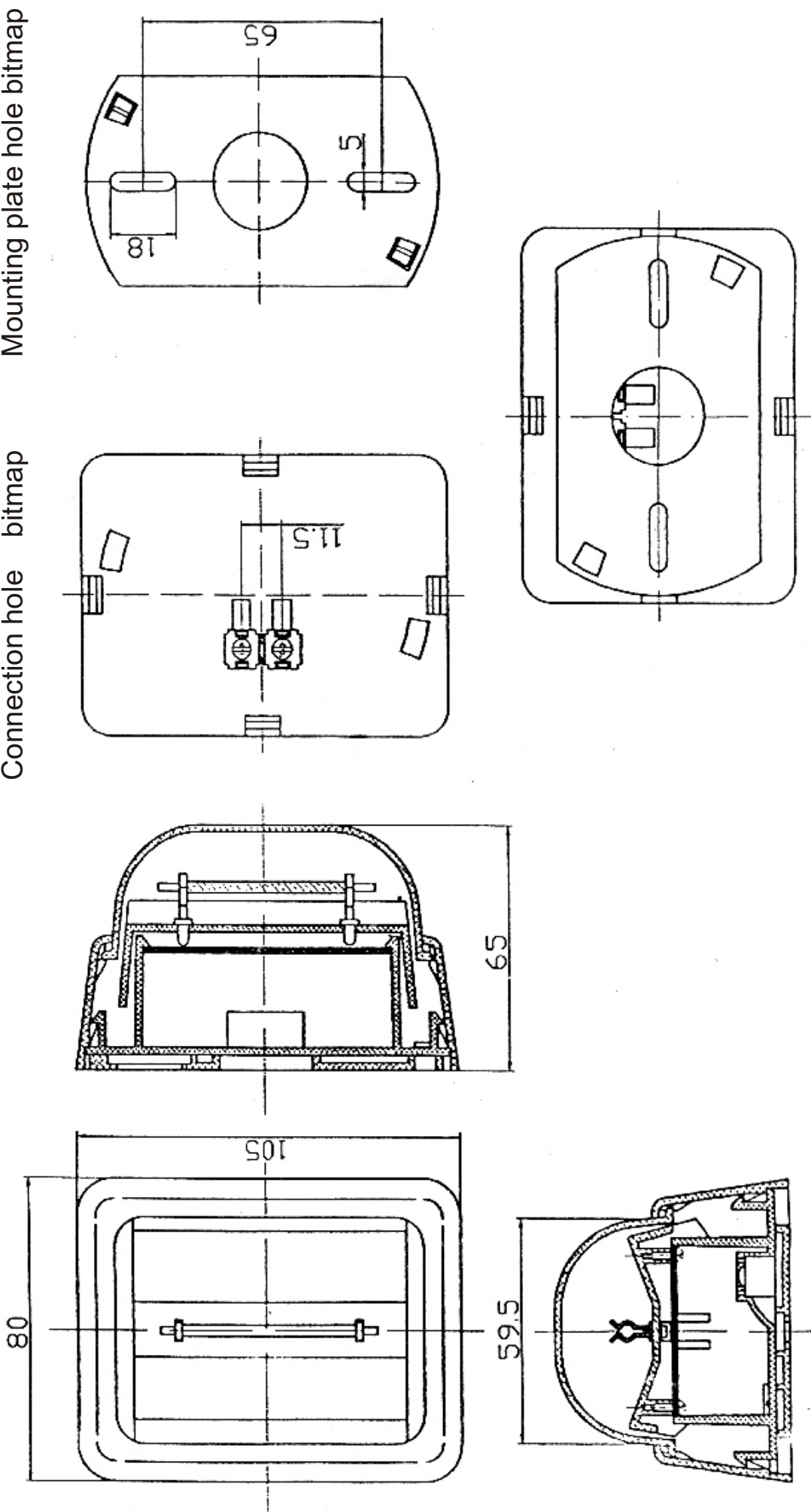
INSTALLATION

1. First drill two holes at place of setting (wall), the dimension of holes is 65mm, at the same time setting plastic expand plug.(It can tighten with screw if the wall made of wood.)
2. Tighten the base with two screw while drew the internet line from the square hole of connection of base.
3. Setting the sound and light alarm on the base and tighten with a screw.

NOTICE

1. It is needs inspect the working situation of alarm periodical in order to ensuring work formerly. Please not taken down to require personally and get touch our company if it have phenomenon unnatural.
2. Inspect the cleaning of alarm's surface. Please scrape neatly with soft paper if it has stain.

INSTALLATION GUIDE



Connection hole bitmap

Mounting plate hole bitmap