

# Fire Alarm

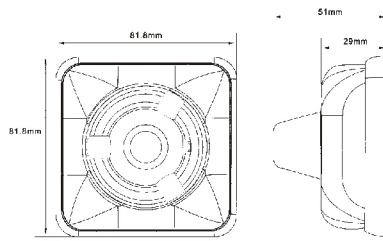
DSW Fire Alarm

## FIRE ANNOUNCIATOR

Model No.: EFA-82



Features:



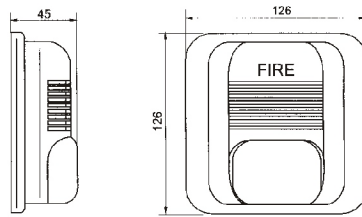
- Piezo Alarm
- High S.P.L
- Reliability & Stable

Model No.	EFA-82
Work Voltage	24VDC
Standard Current	50mA
Min. S.P.L	≥91dB
Tone Nature	Fire
Operate Voltage	15-30VDC
Operate Temperature	-10°C-50°C
Case Material	ABS(uv)

Model No.: EFA-126



Features:



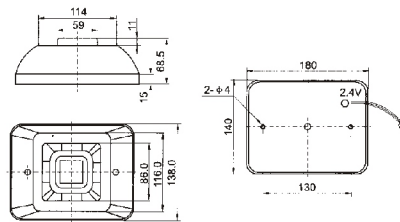
- Piezo Alarm
- High S.P.L
- Reliability & Stable

Model No.	EFA-126
Work Voltage	24VDC
Standard Current	100mA
Min. S.P.L	≥91dB
Tone Nature	Siren/Fire
Operate Voltage	15-30VDC
Operate Temperature	-10°C-50°C
Case Material	ABS(uv)

Model No.: EFA-180/F-140



Features:



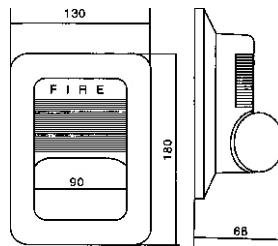
- Dynamic Alarm
- High S.P.L
- Reliability & Stable

Model No.	EFA-180/F-140
Work Voltage	24VDC
Standard Current	300mA
Min. S.P.L	≥112dB
Tone Nature	Ambulance
Operate Voltage	20-28VDC
Operate Temperature	-10°C-50°C
Case Material	ABS(uv)

Model No.: EFA-183



Features:



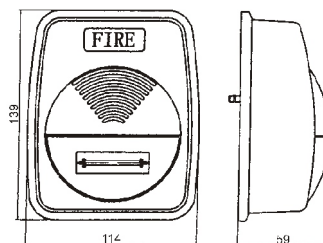
- Piezo Alarm
- High S.P.L
- Reliability & Stable

Model No.	EFA-183
Work Voltage	24VDC
Standard Current	300mA
Min. S.P.L	≥112dB
Tone Nature	3 Tone
Operate Voltage	20-28VDC
Operate Temperature	30°C-70°C
Case Material	ABS(uv)

Model No.: EPA-140



Features:



- Piezo Alarm
- High S.P.L
- Reliability & Stable

Model No.	EFA-140
Work Voltage	9-24VDC
Standard Current	150mA
Min. S.P.L	105dB
Tone Nature	Siren/Ambulance/Fire
Operate Voltage	12VDC
Operate Temperature	20°F-40°F
Case Material	ABS(uv)

DSW Security

The information contained herein is believed to be correct, but no guarantee for accuracy, completeness