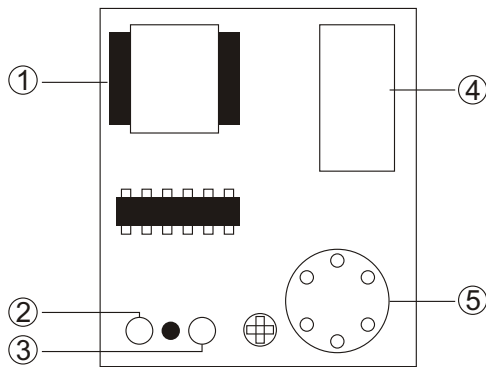




IGNITABLE GAS ALARM

COA-11

SKETCH MAP



1. POWER
2. POWER LED
3. ALARM LED
4. WIRELESS
5. SENSOR

FEATURES

- Loud 85 decibel alarm
- Permanent carbon monoxide sensor & gas sensor
- Power Supply: AC220V
- Power Consumption:1W (Static) 1.5W(Dynamic)
- Sensitivity: 1%LEL-25%LEL
- Operating Temperature: -10°C - +50°C
- Ambient Humidity: Less than 90%
- Horn Level:85Decibels
- Size:110*70*40mm

SPECIFICATION

Superior sensor are adopted for this product. The ignitable leakage gas can be detected by the method of light/sound alarm and driver the valve to remove the danger.

Note: This product can be used as independent family alarm equipment, and also can be used as

front detector of alarm system

- Type of Gas Sensed”
- +LP(Butane, Propane) used in normal and mini gas bottles
- +Gas from piping system (city gas)and natural gas (Methane)

ATTENTION

- Install Firmly to avoid impact and drop;
- Don't let dust and oil block the ventilation slots;
- Don't install product near hot, humid and oiling sources. Don't install it near window or fan, where leakage gas can be quickly disappeared. The best temperature is +50°C or -10°C.
- Monthly checking if equipment can work well by pushing a little gas from a cigar lighter near the ventilation slots.
- Inform to the supplier for warranty if there's something wrong with the equipment. Don't repair or dismantle by unprofessional persons.

APPLICATION

- Mounted on the wall or cabinet, about 150cm above the ground for LPG or about 30cm below the ceiling for coal gas and natural gas used.
- When the ignitable gas is detected, the gas red indicator shall be flashed with “di-di-di” alarm sound until the ignitable gas disappears.
- When CO gas is detected. CO red led flash and horn sound.

How to do when you are alarmed

- Carefully remove all children and not related people from that area.
- Turn off all gas valve and gas bottle, open all doors and windows.
- Don't use electrical fans, not turning any contactors. Don't let electric sparks appear.
- Waiting till the equipment stop alarm then checking the gas system or phone to gas supplier to verify it.