

Smoke Detector DSW928-V Instruction

The product is a new type of photoelectric smoke detector, it use matched with DSW07. When it detects smoke, its LEDs flash quickly and the main DSW07 alarm, dial, which tell you in advance that fire will occurs and avoid unwanted loss, and take you safety and convenience.

Specification

Power supply: DC18V- DC35V

Static current: 3mA

Working current: 5mA

Double LED: flash once every 10sec(when no alarming)
quickly flash(when alarming).

Connect-wire method: two-wire connection

Where fit to install smoke detector

1. At first, you need install one item in every bedroom and route way at least.
2. Stairway is important for you to rush out when fires occur, so there must install smoke detector on the top of stairway.
3. You at least require one detector in every space of every floor, including finished attics and basements.
4. Install one detector beside every electric facility.
5. you'd better Install smoke detectors in the middle of ceiling, because smoke always spread up;
6. If some reasons cause you can't install them in the middle of ceiling, you also need to install them at least 10cm away from the wall.
7. If you like to install them on the wall, they should be installed 10-30.5cm away under the ceiling. Diagram 1.

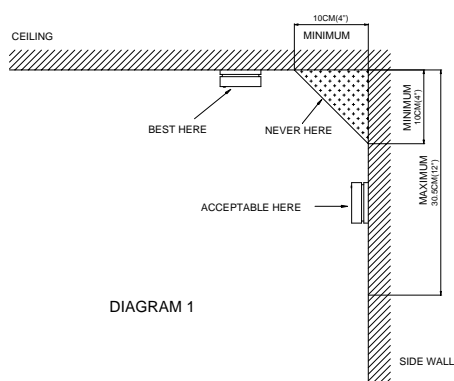


DIAGRAM 1

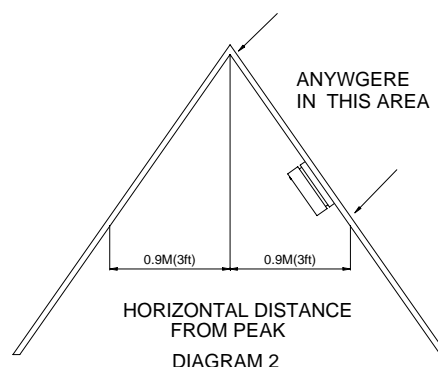
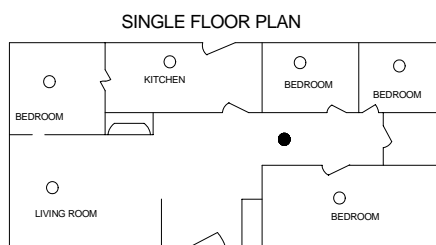


DIAGRAM 2

8. You need install more than one detector when the length of your hall exceeds 9m.
9. In an oblique roof room, install the detector 0.9m away from the top. Diagram 2.
10. How to install smoke detectors in a removable house. The removable house is short of heat isolation, so you'd better install the alarm 10-30.5cm away from the ceiling.

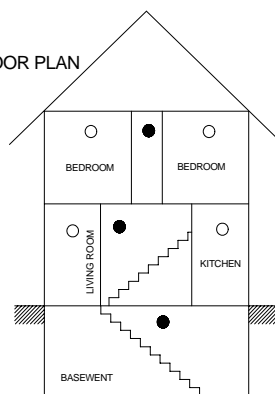
Where not fit to install smoke detector

1. Where combustion are permitted to produce. For example unventilated kitchens, garages, and furnace ;
2. Near faner;
3. In very damp, humid or steamy areas: Keep units at least 3m away from showers saunas, dishwashers, etc.
4. In very dusty, dirty, or greasy areas;
5. In very drafty areas, where smoke will be blown away from the unit completely,
6. In air-logged areas, that will clog the sensing chamber;
7. Where Less than 305mm away from fluorescent lights. Electrical "noise" can interfere with the sensor.
8. In "dead air" space, for example, in Diagram 1, near the corner less than 10cm.
9. In smoking meeting room, don't install the alarm there for the unit will alarm when several persons smoke.



- SMOKE ALARM FOR MINIMUM PROTECTION
- SMOKE ALARM FOR ADDITIONAL PROTECTION

MULTIPLE FLOOR PLAN



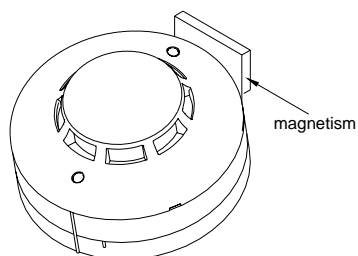
Connection-wire diagram



- loosen the screws arrow pointing in the right figure and twine the line head on the screw thread under gasket. And then tighten up the screws.
- Terminal 5 connect R30 "+" of control unit
- Terminal 2 connect R30 "-" of control unit.

Installation

1. Press and hold the base and turn it counterclockwise, take down base;
2. According to the number mark on base and connection-wire diagram, connect wire to number corresponding screw with gasket;
3. Fix the base on the selected position;
4. Cover the alarm body: make the short line on the base aim at the long line on alarm body and turn clockwise until the long line on base aim at the long line on alarm body.



Test

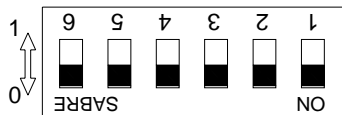
1. Switch on power, the LEDs should flash once at the same time every about 10sec;
2. Put magnet near inner pole reed tube and attract it(attention the position like right fig.), the LEDs turn to flash quickly and the main DSW07 alarm and dial;
3. If the LEDs don't flash quickly, please check whether the magnet using is correct or not.

Regular maintenance

1. Test it at least once a week.
2. Clean the smoke alarm at least once a month. Gently vacuum off dust using vacuum's soft brush attachment;
3. Never use water, cleansers to clean your smoke alarm since they may damage the unit

Coding method

DSW928-V smoke detector can be identified by channel code; by 6-bit coding switch its channel code has 64 coding methods (detail in following table).



Coding	Channel	Coding	Channel	Coding	Channel	Coding	Channel
000000	0	010000	16	100000	32	110000	48
000001	1	010001	17	100001	33	110001	49
000010	2	010010	18	100010	34	110010	50
000011	3	010011	19	100011	35	110011	51
000100	4	010100	20	100100	36	110100	52
000101	5	010101	21	100101	37	110101	53
000110	6	010110	22	100110	38	110110	54
000111	7	010111	23	100111	39	110111	55
001000	8	011000	24	101000	40	111000	56
001001	9	011001	25	101001	41	111001	57
001010	10	011010	26	101010	42	111010	58
001011	11	011011	27	101011	43	111011	59
001100	12	011100	28	101100	44	111100	60
001101	13	011101	29	101101	45	111101	61
001110	14	011110	30	101110	46	111110	62
001111	15	011111	31	101111	47	111111	63